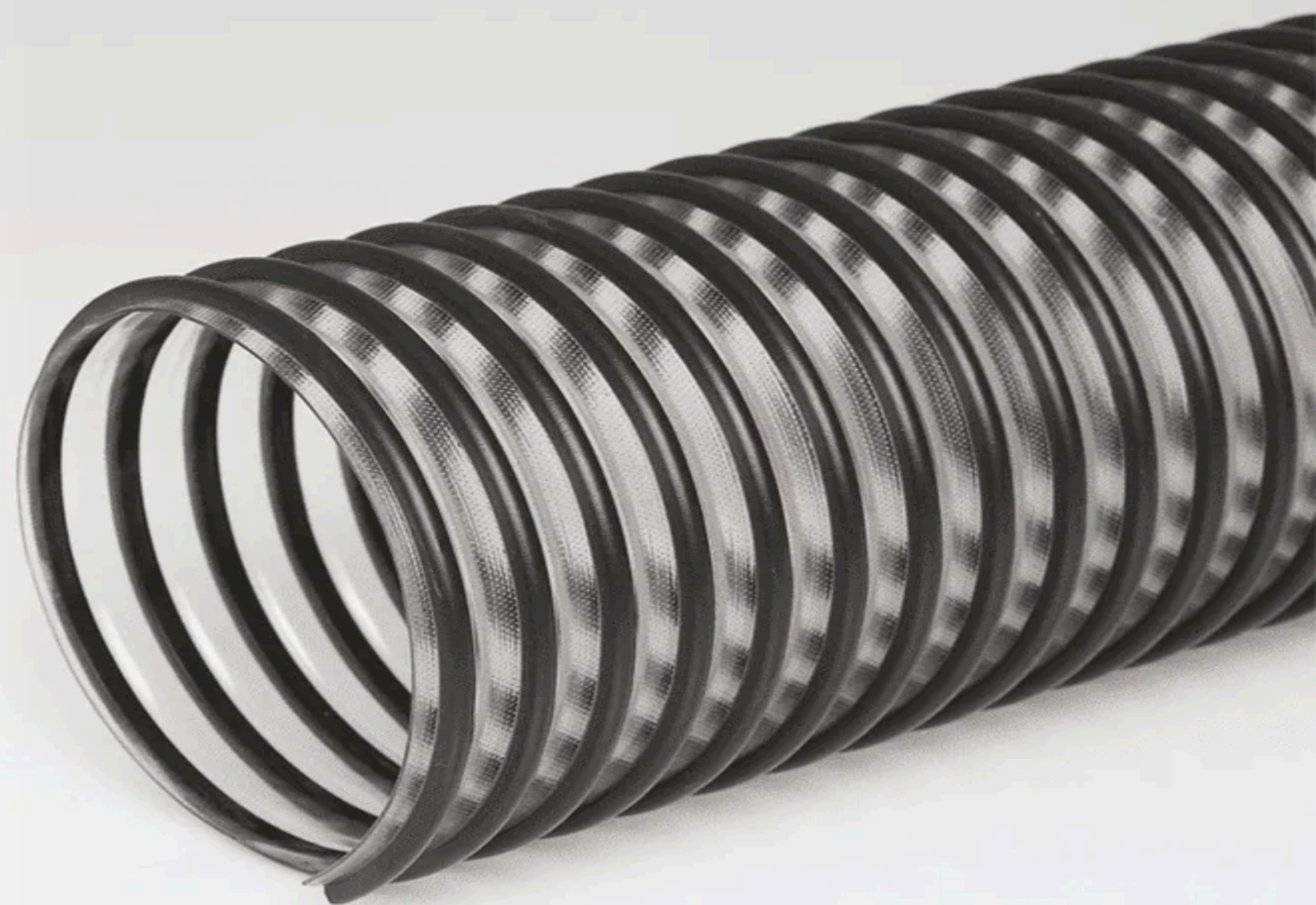


# FLEX-TUBE® PV

## PVC SUCTION HOSE

THE FLEX-TUBE PV IS A FLEXIBLE AND CRUSH RESISTANT MEDIUM WEIGHT, CO-EXTRUDED PVC TUBE THAT BOASTS A RIGID BLACK EXTERNAL PVC HELIX FOR ADDED REINFORCEMENT AND ABRASION RESISTANCE.

**APPLICATIONS:** INDUSTRIAL VACUUM CLEANERS, LAWN AND LEAF COLLECTION, PHARMACEUTICAL, SILICA DUST, WET PICK UP, WOODWORKING AND FURNITURE INDUSTRY.



**Construction:** Medium weight coextruded PVC hose with a rigid external PVC helix

**Temperature Range:** 20°F to 160°F

**Standard Color:** Clear with Black Helix

**Standard Lengths:** Sold in 25 foot lengths

INSIDE DIAMETER (IN)	APPROX. WEIGHT (LBS/FT)	WALL THICKNESS (IN)	CL BEND RADIUS (IN)	COMPRESSION RATIO	NEGATIVE PRESSURE (IN/HG)	WORKING PRESSURE (PSI)
.75	.09	.020	1	1.75:1	29	55
1	.12	.022	1.7	2:1	29	45
1.25	.17	.024	1.5	2:1	29	35
1.5	.22	.026	1.5	2:1	29	35
1.75	.25	.026	2	2:1	27	30
2	.32	.026	2.2	2:1	27	28
2.25	.37	.030	2.5	1.9:1	25	25
2.5	.4	.030	3.1	2:1	26	25
3	.5	.030	3.7	2:1	22	18
4	.72	.032	4	2:1	14	16
5	.92	.035	5.25	2:1	12	17
6	1.11	.035	6.25	2:1	10	12
7	1.32	.035	7	2:1	10	11
8	1.5	.035	8	2:1	6	10
10	1.85	.040	9.5	2:1	4	7
12	2.8	.040	10	3:1	4	5

Technical data based on 2 ft. straight lengths of hose @ 72°