

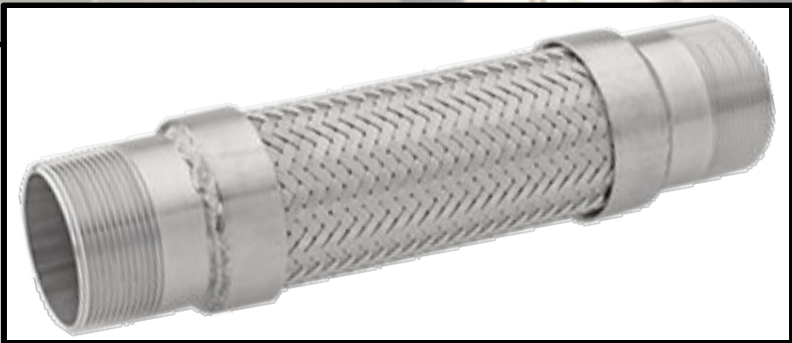
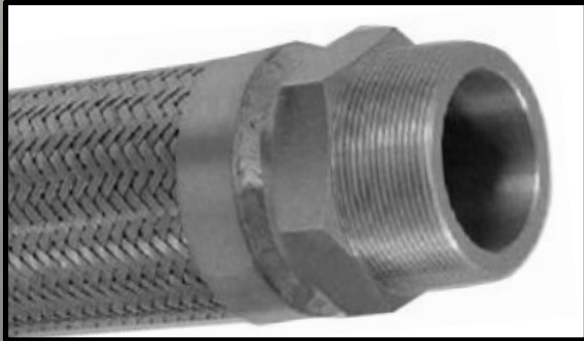
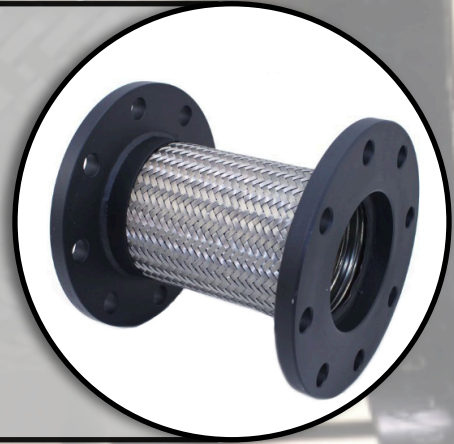


(800) 344-0150



A team driven to provide quality hose solutions through ingenuity, passion and commitment.

**PUMP CONNECTOR FLEX HOSE:** Our custom cut and coupled standard pump connector flex hose assemblies are built tough and designed for maximum absorption of normal pump vibration. The flexibility of our corrugated stainless steel metal hose used to fabricate each pump connection allows for misalignment issues to be negated. We stock this hose year-round and offer sizes beginning with 1/4" ID all the way up to 12" ID. **No length or minimum order requirements!**



**CUSTOM AND STANDARD FITTINGS:** We stock a full line of SS Grade 316, 304 and Carbon Steel fittings in our welding cells, and our certified welding team is prepared to handle all of your custom coupling needs.

- NPT
- NPT HEX BEVEL
- JIC SWIVEL
- FLOATING 150# FLANGE
- FIXED 150# FLANGE
- THREADED PIPE UNION

Our corrugated metal tube is offered in both 321 and 316 grade stainless steel, while the braiding is 304. Upon request, a secondary braid can be added for maximum pressure ratings and increased resistance to harsh environmental conditions.

2611 Thunderhawk Ct.  
Dayton, OH 45414

(800) 344-0150 phone  
(937) 454-2086 fax

sales@ushoseco.com  
www.USHOSECO.com

PUMP CONNECTOR FLEX HOSE