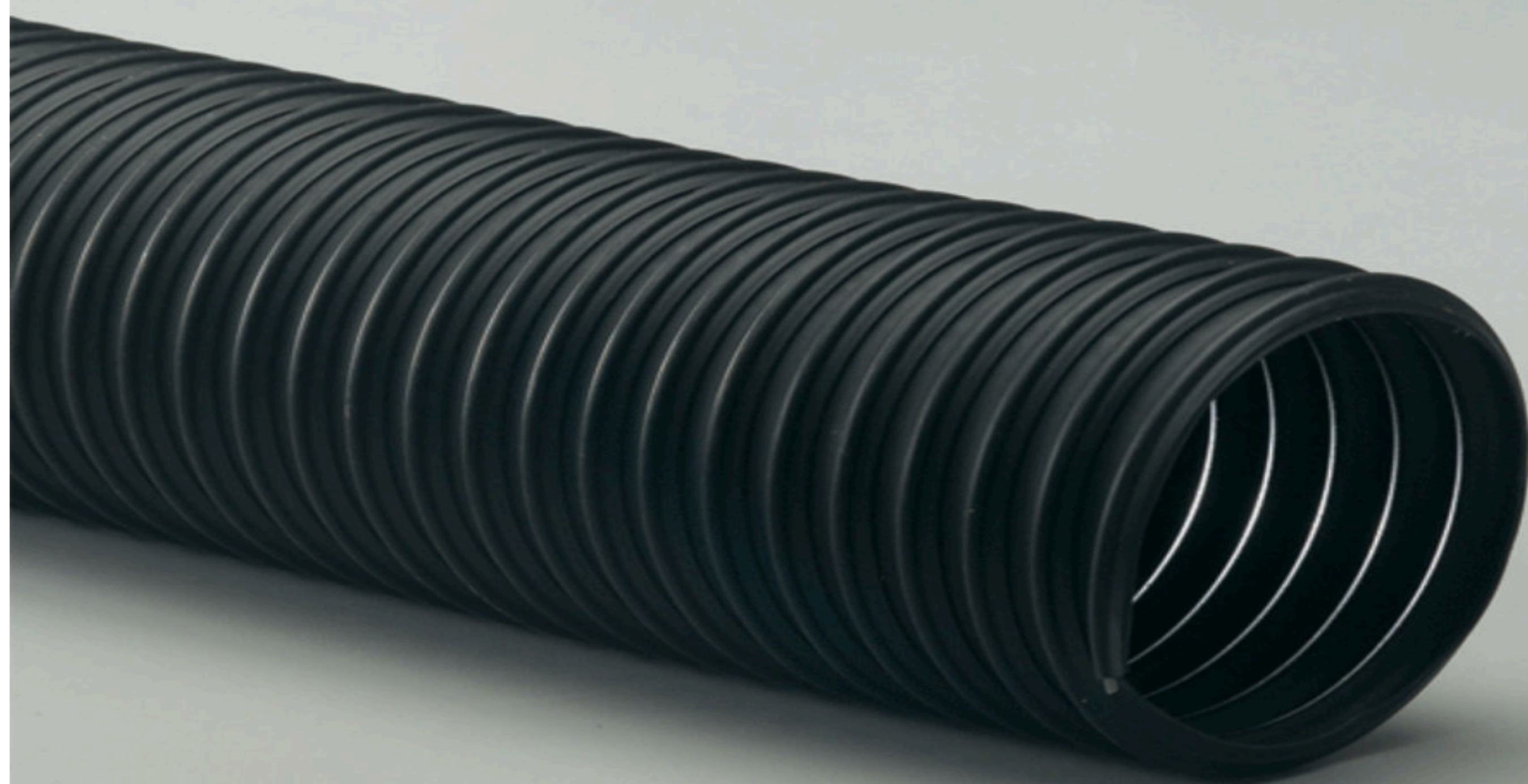


FLEXADUX T7

GENERAL PURPOSE FLEX HOSE

THE T7 IS A MEDIUM WEIGHT BLACK THERMOPLASTIC RUBBER FLEX HOSE. THIS HEAVY-DUTY HOSE IS DESIGNED FOR APPLICATIONS WITH A WIDE TEMPERATURE RANGE. IN ADDITION, THE SMOOTH INTERIOR PROVIDES MINIMAL FRICTION LOSS AND EFFICIENT AIRFLOW. ALSO, ITS OTHER FEATURES INCLUDE ABRASION AND CHEMICAL RESISTANCE, CREATING LONG-LASTING QUALITY.



Technical data based on 2 ft. straight lengths of hose @ 72°

Construction: Medium weight thermoplastic rubber hose reinforced with a spring steel wire helix

Temperature Range: -60°F to 275°F

Standard Color: Black

INSIDE DIAMETER (IN)	APPROX. WEIGHT (LBS/FT)	WALL THICKNESS (IN)	CL BEND RADIUS (IN)	COMPRESSION RATIO	NEGATIVE PRESSURE (IN/HG)	WORKING PRESSURE (PSI)
1.5	.16	.025	1.7	2:1	29	25
1.75	.19	.025	1.8	2:1	29	21
2	.25	.030	2	2:1	29	19
2.25	.28	.030	2.2	2:1	29	17
2.5	.32	.030	2.5	2:1	29	14
3	.4	.030	3	2:1	29	11
3.5	.45	.030	4	2:1	29	10
4	.67	.030	5.5	2:1	29	9
4.5	.75	.030	6	2:1	22	8
5	.85	.030	6.5	2:1	17	8
5.5	.9	.030	6.8	2:1	12.5	7
6	.82	.030	6	3:1	11	7
7	.95	.030	7	3:1	9	5
8	1.2	.030	8	3:1	5.5	4.5
9	1.7	.030	9	3:1	10	4
10	2.2	.030	10	3:1	6.5	4
12	2.7	.030	12	3:1	5	3.8

DUCTING